



Oxnard Union High School District

NEW DEL SOL HIGH SCHOOL

Interview Presentation

MCCARTHY

AGENDA

5

Personnel / Leadership

3

Past Projects/Experience

4

**Overall Ability and General
Suitability**

2

**Budget/Schedule/Value
Engineering**

1

Current Project



5

Personnel / Leadership



Paul Erb

Executive Vice President



Grady Ritua

Project Executive (PX)



Luis Lizama

Senior Project Manager (PM)



Kris Sponable

Project Superintendent (PS)



Diana Sanchez

Project Engineer (PE)



Chris Cosart

*Assistant Project Manager
(APM)*



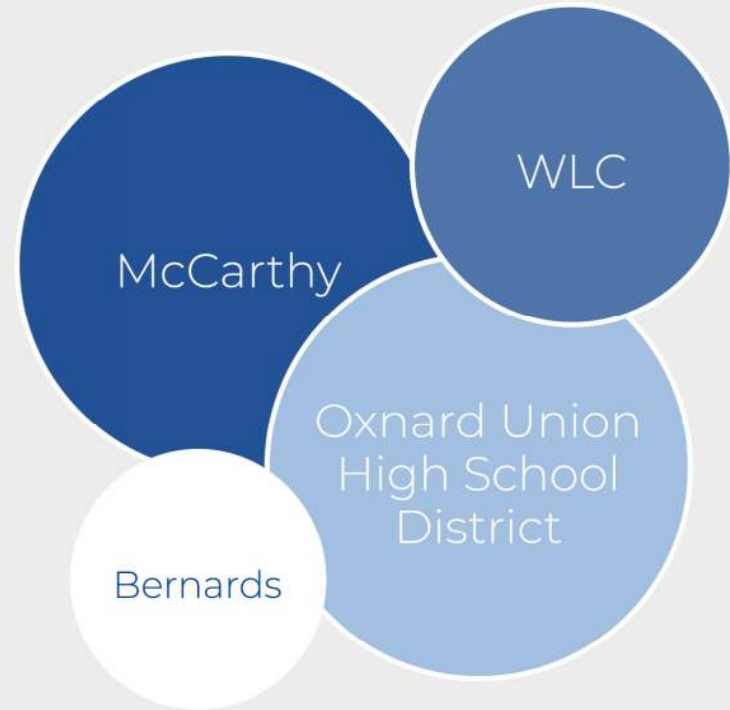
Bonnie Money

*Project Administrative
Assistant*



Clint Fawcett

*Vice President,
Preconstruction*



- » Team Relationships
- » Contractor's Presence in Southern California
- » Team Involvement in Community

PAST PROJECTS / EXPERIENCE

3

RANKED #1

Top Education Builder in CA ENR
California Northwest (2020)

35 YEARS

of experience with
California school districts

MORE THAN 40

lease leaseback projects
in California

OVER 375

School district Projects
in California

OVER 800

School district
Projects nationwide



Los Angeles Unified School District - South Region New High School No. 2



Santa Monica-Malibu Unified School District,
Malibu Middle High School



Paramount Unified School District Hollydale School
New Gymnasium and Locker Room Building



Palm Springs Unified School District
Rancho Mirage High School



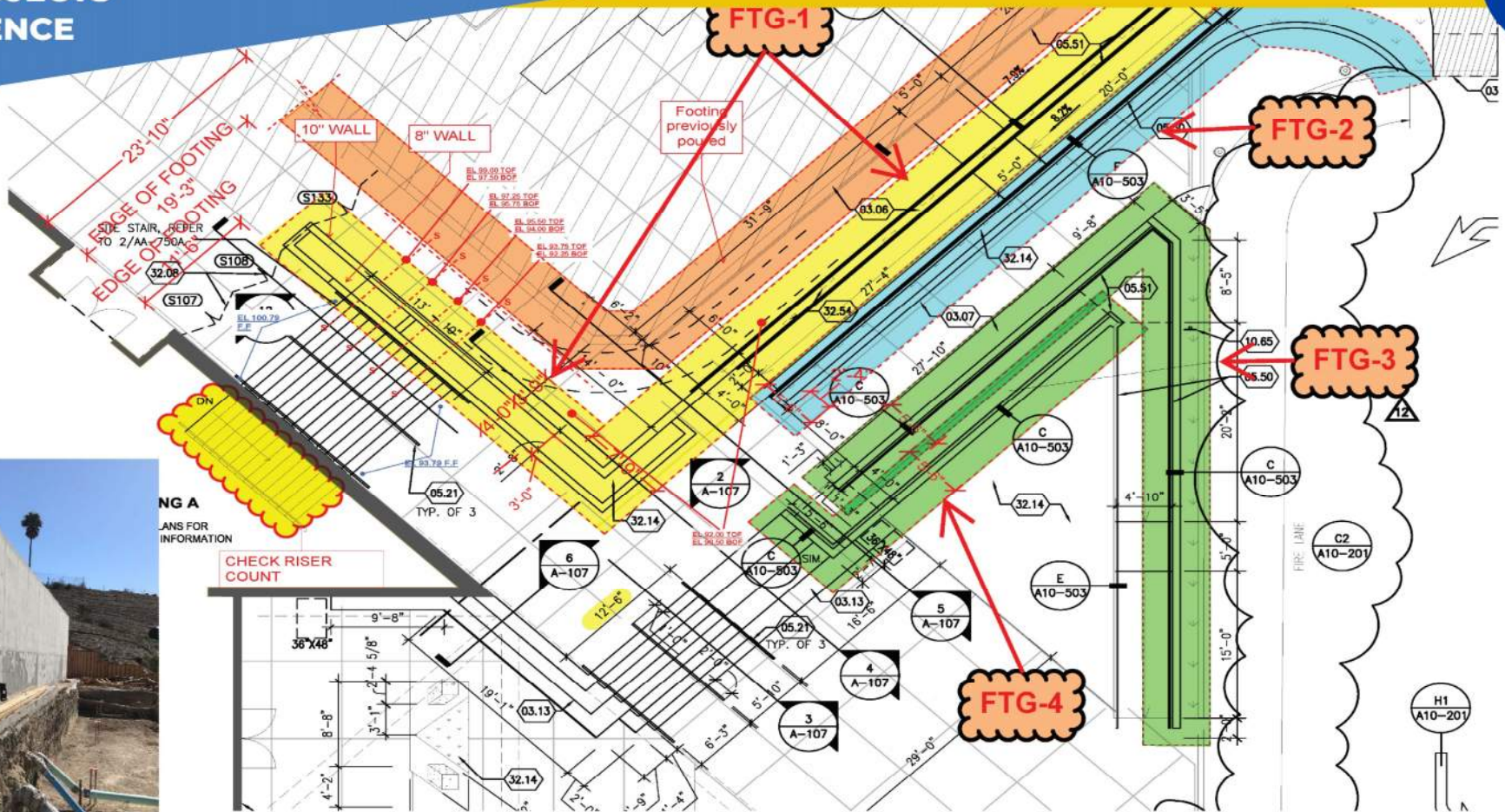
Paramount Unified School District,
Paramount High School Science Building



Centinela Valley Union High School District -
Hawthorne High School



Arcadia Unified School District - Arcadia High School



PROJECT	MALIBU HIGH SCHOOL	PROJECT No.	7722
SUBJECT	Switch Back Ramp walls for Bldg E.		
Sketch #	001		
DRAWN BY	PALOMERA	DATE	09/01/20
DRWG No.	1 OF 1		

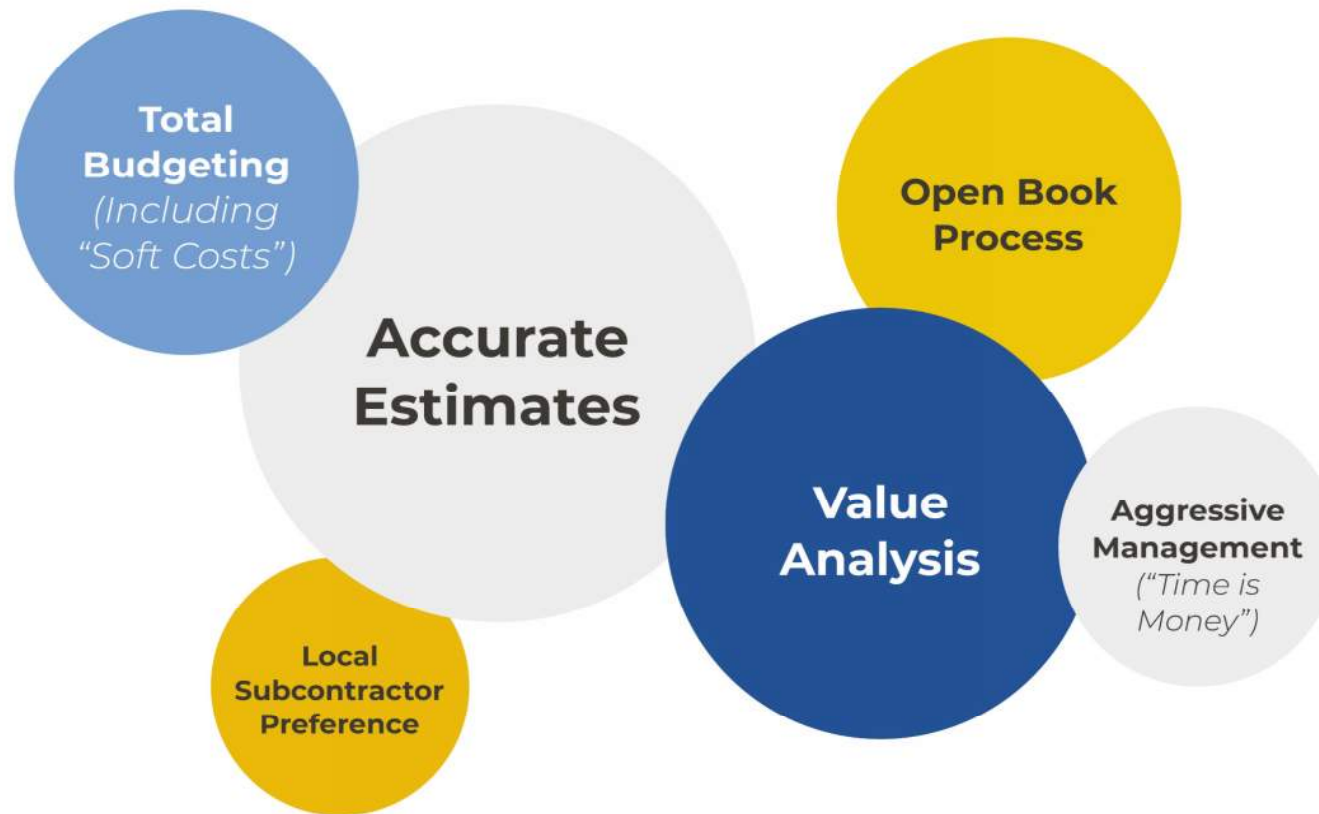
4

Overall Ability and General Suitability

- » Experience with Design Team
- » Reputation with Subcontractor Community
- » Safety
 - » COVID-19
- » Campus and Local Knowledge
- » Self-perform
- » Apprenticeship/ Local Hire

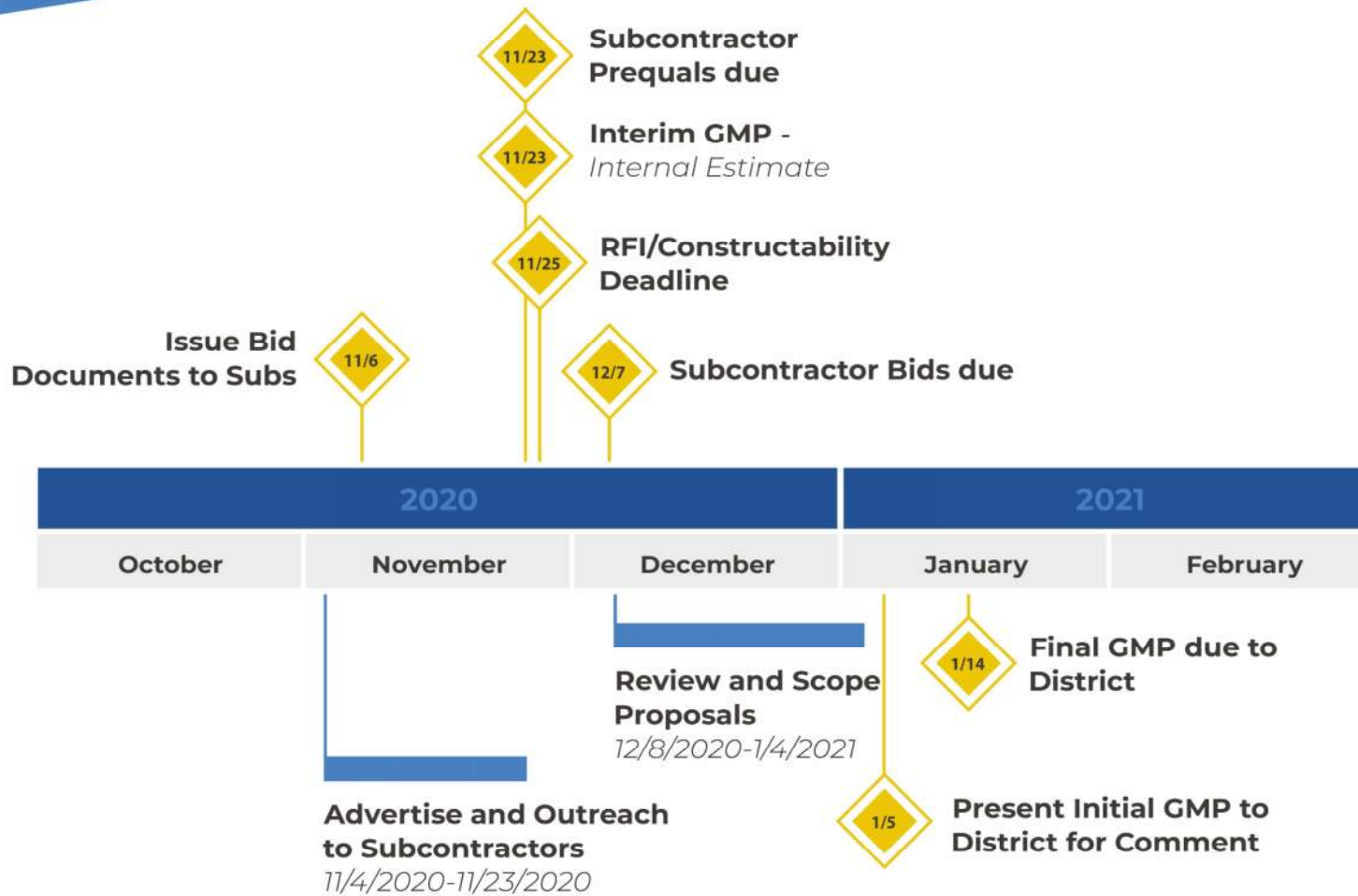


Palm Springs Unified School District Rancho Mirage High School



PRECONSTRUCTION ACTIVITIES

2



RFQ/P

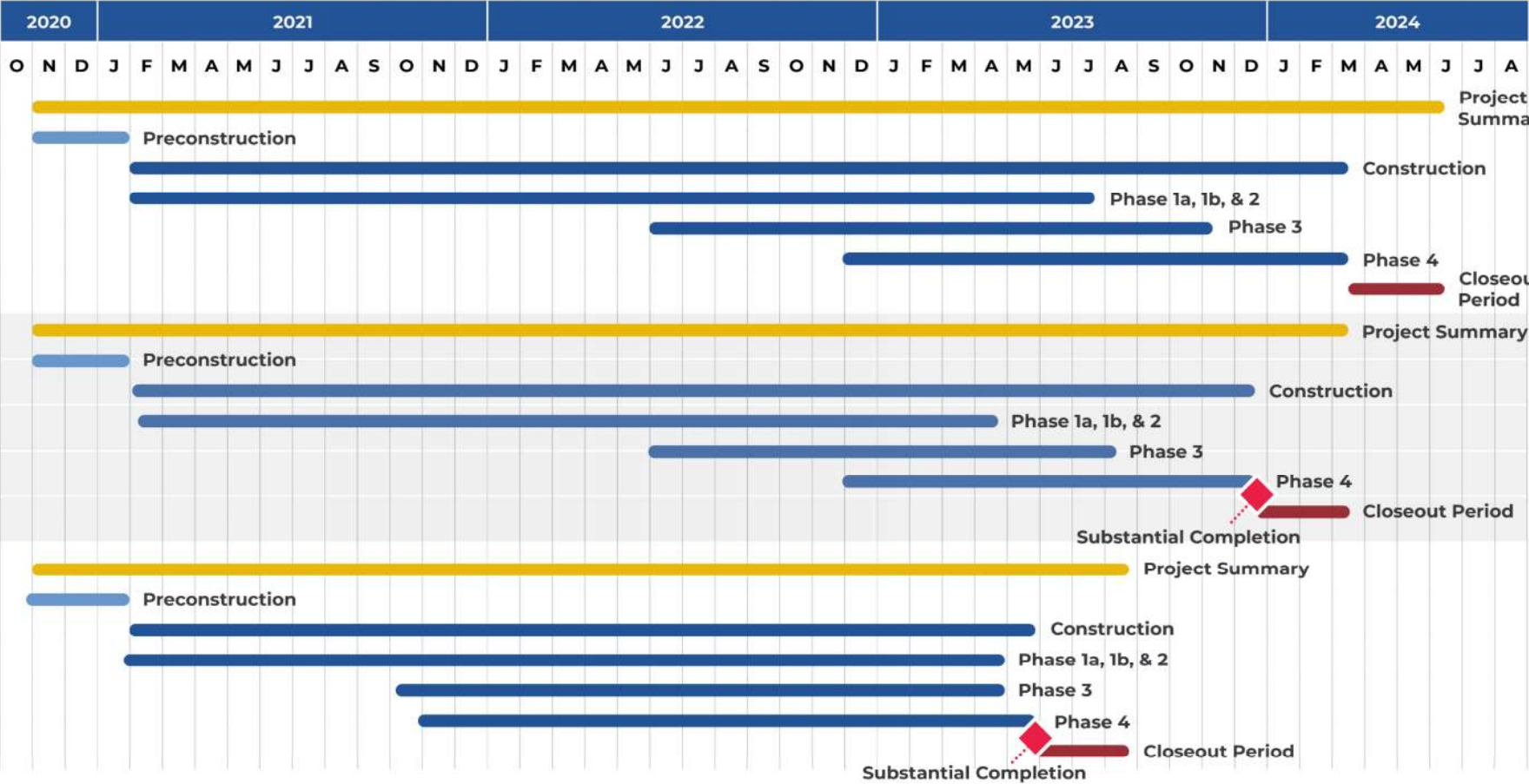
ALLOWABLE

ENHANCED

Exhibit F - Dates /Deadline

McCarthy - Proposed Dates

McCarthy - Proposed Dates





Phase 1 and 2 | Start of Construction



Under Construction

Temp Fence with Green
Screen & Erosion Control

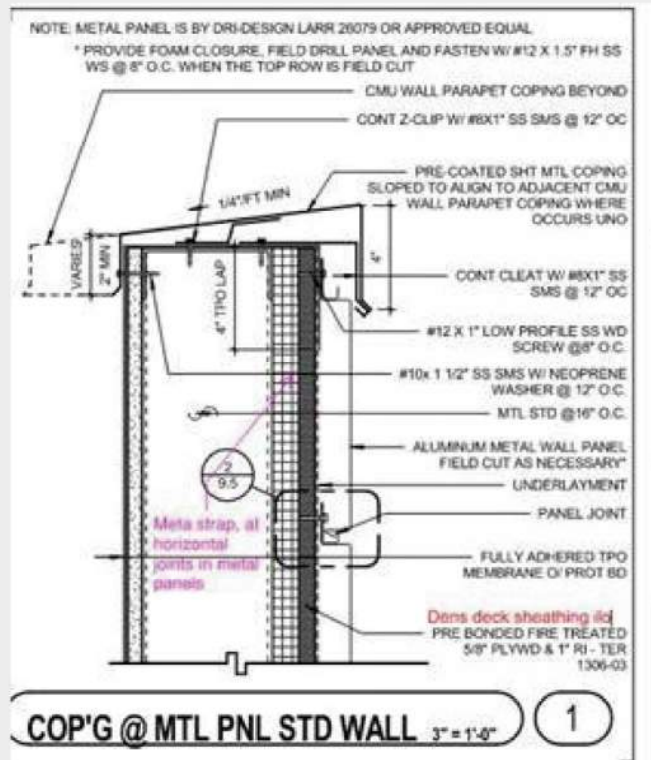
Construction
Trailer
Co-Location

OUHSD PM/IOB
Trailer



THANK YOU!

CONSTRUCTABILITY



- » **A potential improvement** would be to replace the fire rated plywood with Densdeck sheathing at exterior locations.
- » *Having plywood adds another trade, resulting in added time and added cost.*
- » *Strap will allow Dri-Design metal panel to be attached at 12" o.c. along the horizontal direction.*